

# DATAMARS

## Readers Firmware Update

Revision 2.0

File name: Readers firmware update



Date	Revision	Description	Author	Verified	Approved
XX.XX.2015	1.0	First Edition	EFR	EFR	EFR
01.10.2015	2.0	Second Edition	LRI	NBR	BDA

---

## Table of Contents

<b>1</b>	<b>S-ID DOWNLOAD AND INSTALLATION .....</b>	<b>3</b>
1.1	DOWNLOAD .....	3
1.2	S-ID INSTALLATION .....	3
1.3	VCP DRIVER INSTALLATION .....	6
<b>2</b>	<b>READER UPDATE PROCEDURE .....</b>	<b>8</b>

# 1 S-ID download and installation

## 1.1 Download

To install the S-ID companion software on your PC, download the zip file from the webpage [https://datamars.com/wp-content/uploads/sid\\_setup.zip](https://datamars.com/wp-content/uploads/sid_setup.zip) under the tab “Download”, as indicated in Figure 1.1.

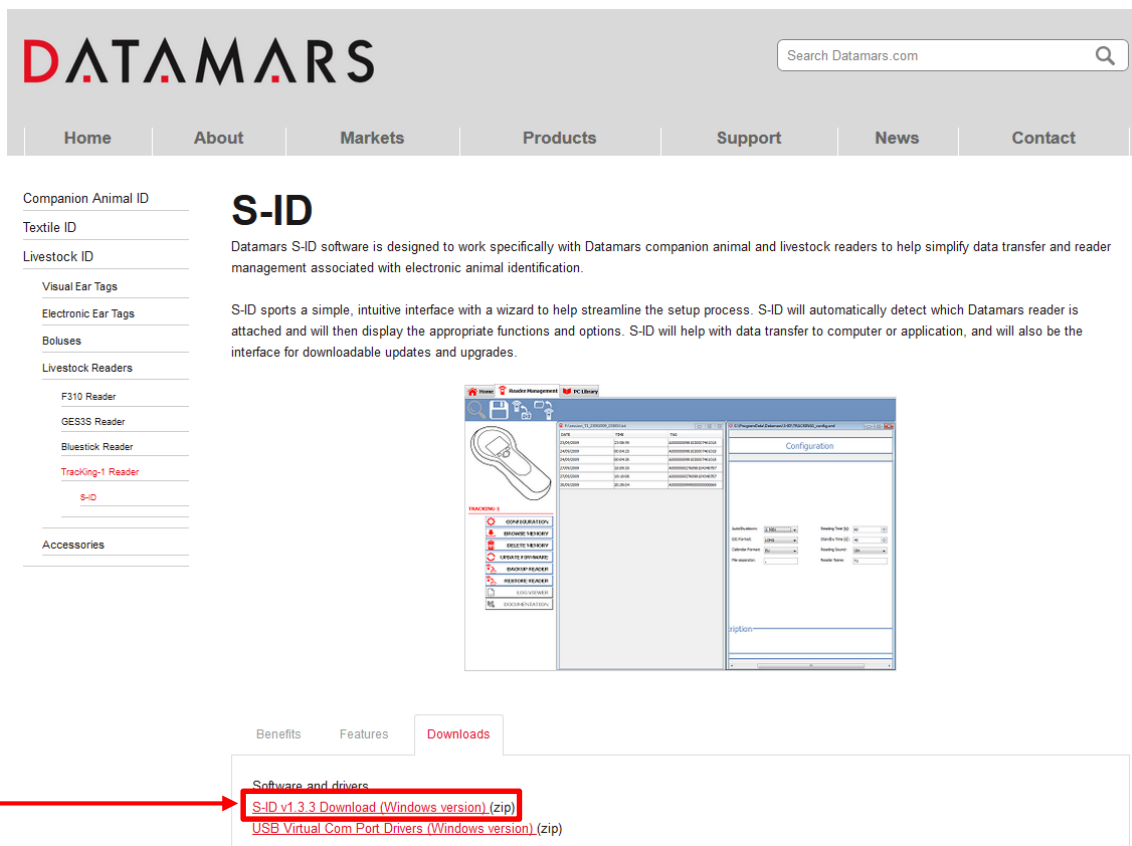


Figure 1.1

## 1.2 S-ID installation

When the download is finished, open the zipped folder and double left-click on the *setup.exe* file.

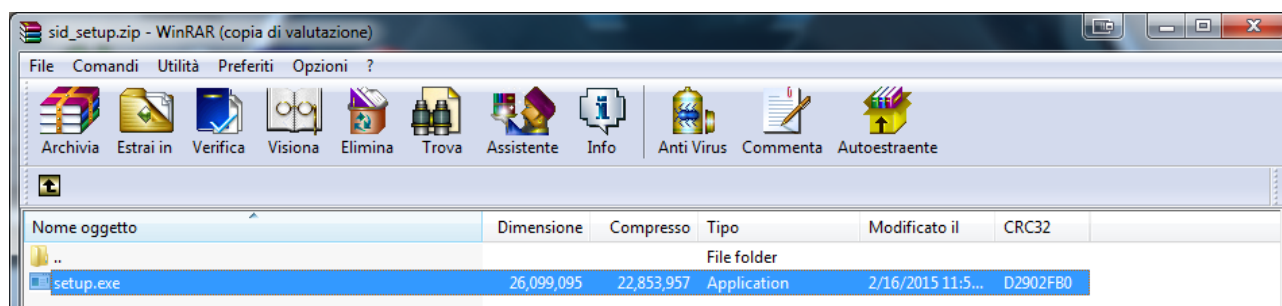
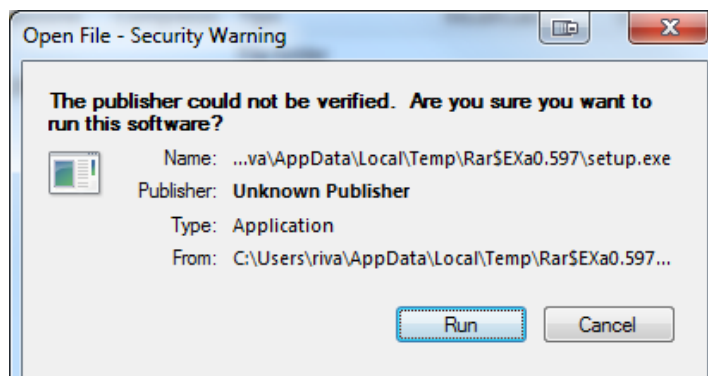


Figure 1.2

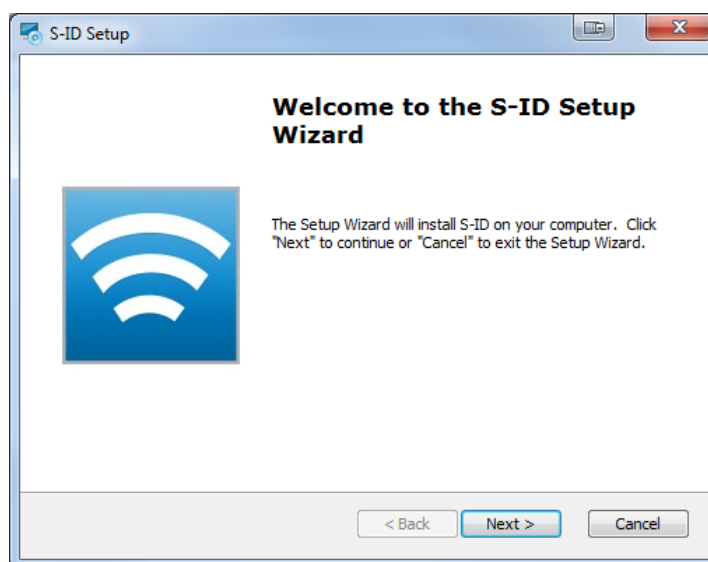
Click on *Run*, as shown in **Figure 1.3**.



**Figure 1.3**

The next steps guide you through the installation of the S-ID software.

On the first window select “*Next*” as shown in **Figure 1.4**.



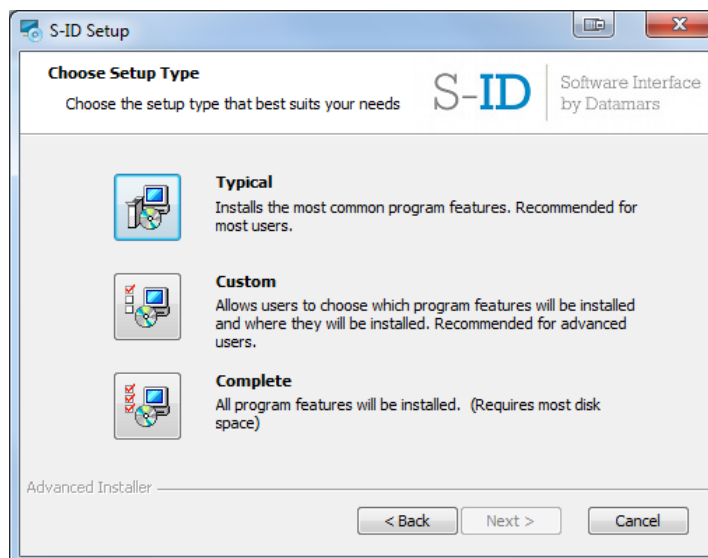
**Figure 1.4**

Choose “*I accept the terms in the License Agreement*” and click on “*Next*”.



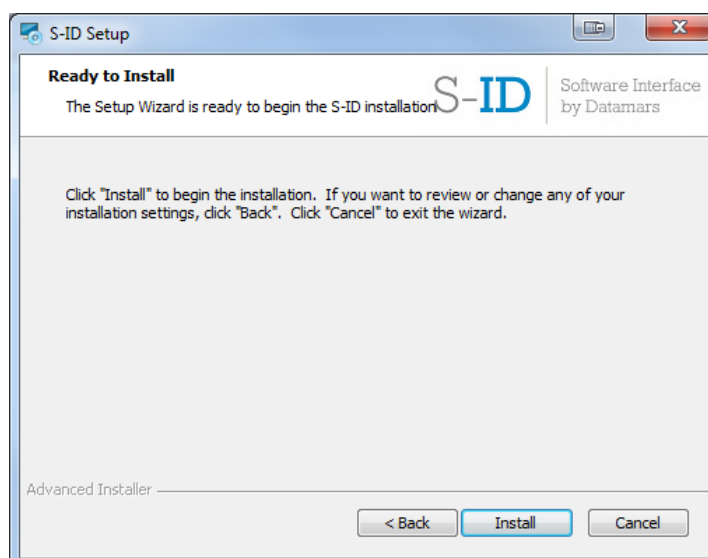
**Figure 1.5**

Choose “*Typical*” installation, as shown in **Figure 1.6**.



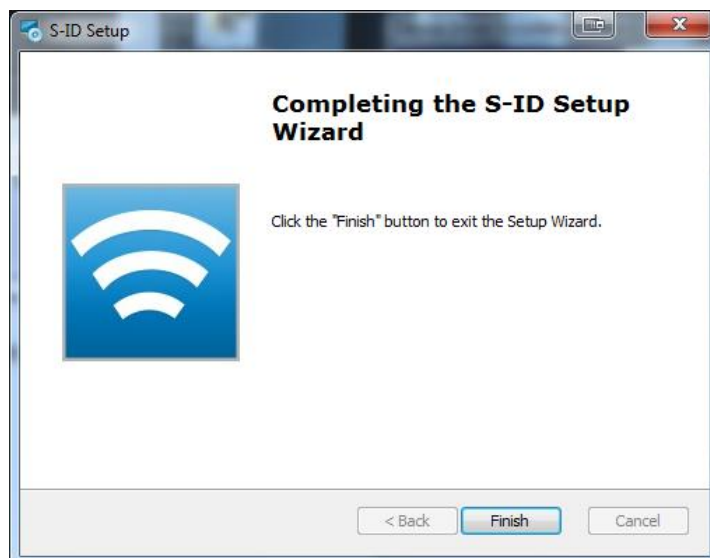
**Figure 1.6**

Click on *Install* to start the installation of the S-ID software and wait until the installation has been completed.



**Figure 1.7**

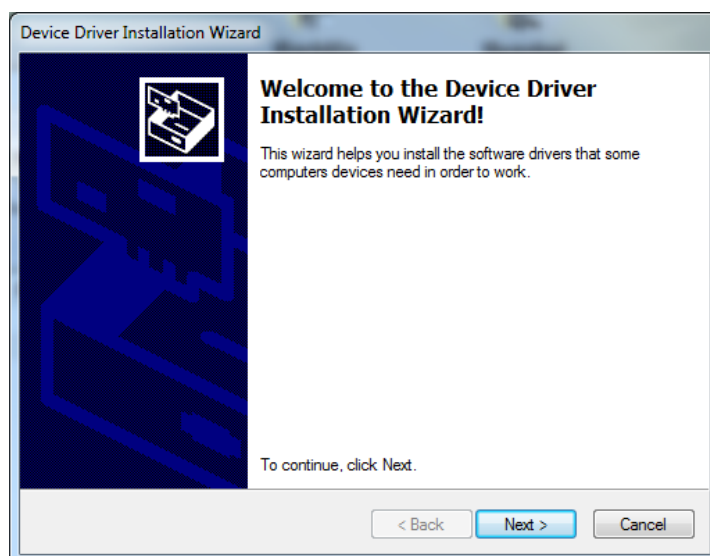
The S-ID installation is now completed. Click on “*Finish*” as shown in **Figure 1.8**.



**Figure 1.8**

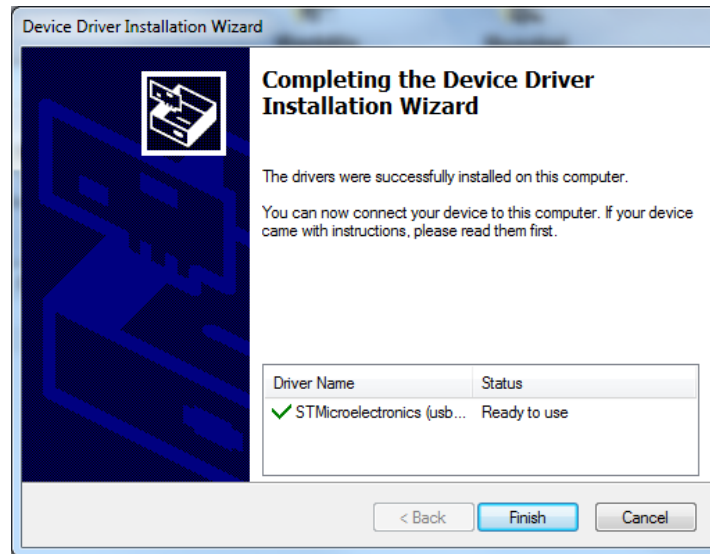
### 1.3 VCP driver installation

After the S-ID installation, the computer asks to install VCP drivers. On the window that appears, click on “*Next*”.



**Figure 1.9**

The VCP drivers' installation is now completed. Click on "*Finish*".



**Figure 1.10**

## 2 Reader update procedure



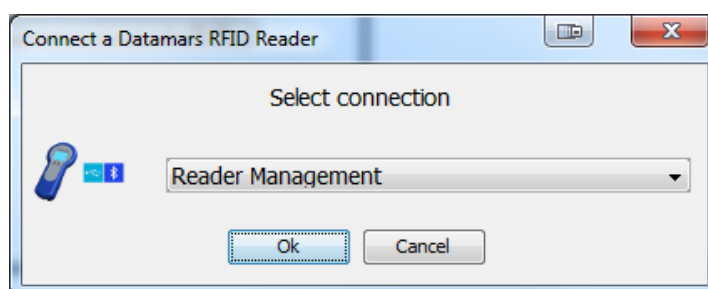
To update the firmware of your reader, double left-click on the S-ID icon on your desktop.

Be sure that your reader is switched off and connected to the computer through the provided USB cable. Click on **CONNECT** in the main window, as indicated in **Figure 2.1**.



**Figure 2.1**

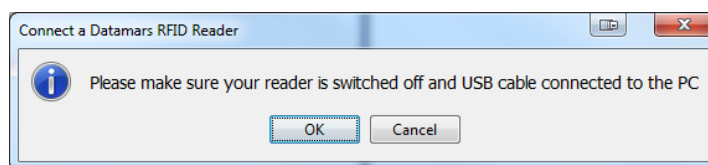
Select “Reader Management” and click on “Ok”.



**Figure 2.2**

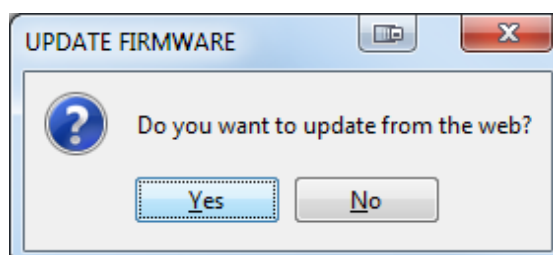


A confirmation that the reader is switched off and connected via USB cable will be requested. If this is the case, click on “OK”.



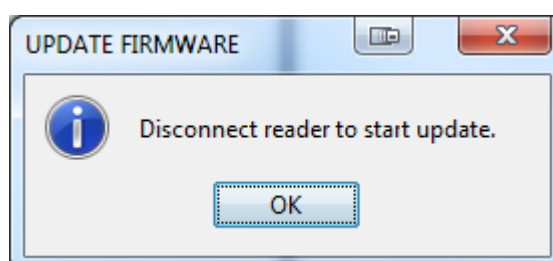
**Figure 2.3**

If a new firmware is available on the web, the software will automatically suggest an update of the reader. Click on “Yes” to start with the update.



**Figure 2.4**

The new firmware will be transferred to the reader. A message box will appear indicating to disconnect the reader from the PC. Unplug the USB cable from the reader to start the firmware update on the device and click “OK”.



**Figure 2.5**

Note that the firmware update will start only if the reader has enough charge to switch it on.

**Figure 2.6** shows an example of one reader’s display while the firmware is being updated. Wait until the update is concluded and the device will be ready to be used.



**Figure 2.6**